

# SWITCHMODE™ Series NPN Silicon Power Transistor

... designed for high speed, high current, high power applications.

- High DC current gain:  
 $h_{FE} \text{ min.} = 20 \text{ at } I_C = 12 \text{ A}$
- Low  $V_{CE(sat)}$ ,  $V_{CE(sat)}$   
 $\text{max.} = 0.6 \text{ V at } I_C = 8 \text{ A}$
- Very fast switching times:  
 $TF \text{ max.} = 0.4 \mu\text{s at } I_C = 25 \text{ A}$

### MAXIMUM RATINGS

Rating	Symbol	Value	Unit
Collector–Emitter Voltage	$V_{CEO(sus)}$	200	Vdc
Collector–Base Voltage	$V_{CBO}$	250	Vdc
Emitter–Base Voltage	$V_{EBO}$	7	Vdc
Collector–Emitter Voltage ( $V_{BE} = -1.5 \text{ V}$ )	$V_{CEX}$	250	Vdc
Collector–Emitter Voltage ( $R_{BE} = 100 \Omega$ )	$V_{CER}$	240	Vdc
Collector–Current — Continuous	$I_C$	40	Adc
— Peak ( $PW \leq 10 \text{ ms}$ )	$I_{CM}$	50	Apk
Base–Current continuous	$I_B$	8	Adc
Total Power Dissipation @ $T_C = 25^\circ\text{C}$	$P_D$	250	Watts
Operating and Storage Junction Temperature Range	$T_J, T_{stg}$	-65 to 200	$^\circ\text{C}$

### THERMAL CHARACTERISTICS

Characteristic	Symbol	Max	Unit
Thermal Resistance, Junction to Case	$\theta_{JC}$	0.7	$^\circ\text{C/W}$

**BUV21**

**40 AMPERES  
NPN SILICON  
POWER  
METAL TRANSISTOR  
200 VOLTS  
250 WATTS**

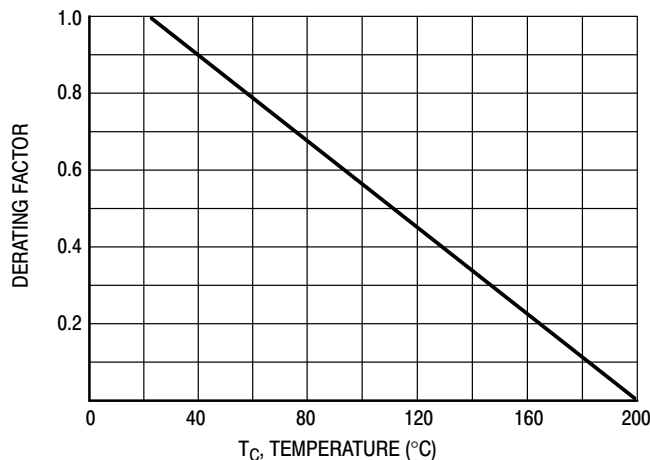
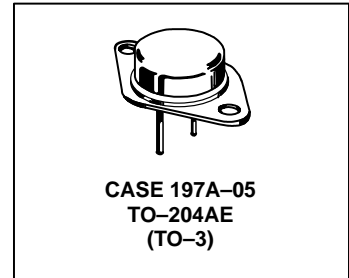


Figure 1. Power Derating

# BUV21

## ELECTRICAL CHARACTERISTICS ( $T_C = 25^\circ\text{C}$ unless otherwise noted)

Characteristic	Symbol	Min	Max	Unit
----------------	--------	-----	-----	------

### OFF CHARACTERISTICS<sup>1</sup>

Collector–Emitter Sustaining Voltage ( $I_C = 200\text{ mA}$ , $I_B = 0$ , $L = 25\text{ mH}$ )	$V_{CEO(sus)}$	200		Vdc
Collector Cutoff Current at Reverse Bias: ( $V_{CE} = 250\text{ V}$ , $V_{BE} = -1.5\text{ V}$ ) ( $V_{CE} = 250\text{ V}$ , $V_{BE} = -1.5\text{ V}$ , $T_C = 125^\circ\text{C}$ )	$I_{CEX}$		3.0 12.0	mAdc
Collector–Emitter Cutoff Current ( $V_{CE} = 160\text{ V}$ )	$I_{CEO}$		3.0	mAdc
Emitter–Base Reverse Voltage ( $I_E = 50\text{ mA}$ )	$V_{EBO}$	7		V
Emitter–Cutoff Current ( $V_{EB} = 5\text{ V}$ )	$I_{EBO}$		1.0	mAdc

### SECOND BREAKDOWN

Second Breakdown Collector Current with base forward biased ( $V_{CE} = 20\text{ V}$ , $t = 1\text{ s}$ ) ( $V_{CE} = 140\text{ V}$ , $t = 1\text{ s}$ )	$I_{S/b}$	12 0.15		Adc
--	-----------	------------	--	-----

### ON CHARACTERISTICS<sup>1</sup>

DC Current Gain ( $I_C = 12\text{ A}$ , $V_{CE} = 2\text{ V}$ ) ( $I_C = 25\text{ A}$ , $V_{CE} = 4\text{ V}$ )	$h_{FE}$	20 10	60	
Collector–Emitter Saturation Voltage ( $I_C = 12\text{ A}$ , $I_B = 1.2\text{ A}$ ) ( $I_C = 25\text{ A}$ , $I_B = 3\text{ A}$ )	$V_{CE(sat)}$		0.6 1.5	Vdc
Base–Emitter Saturation Voltage ( $I_C = 25\text{ A}$ , $I_B = 3\text{ A}$ )	$V_{BE(sat)}$		1.5	Vdc

### DYNAMIC CHARACTERISTICS

Current Gain – Bandwidth Product ( $V_{CE} = 15\text{ V}$ , $I_C = 2\text{ A}$ , $f = 4\text{ MHz}$ )	$f_T$	8.0		MHz
--	-------	-----	--	-----

### SWITCHING CHARACTERISTICS (Resistive Load)

Turn-on Time	$(I_C = 25\text{ A}$ , $I_{B1} = I_{B2} = 3\text{ A}$ , $V_{CC} = 100\text{ V}$ , $R_C = 4\ \Omega$ )	$t_{on}$	1.0	$\mu\text{s}$
Storage Time		$t_s$	1.8	
Fall Time		$t_f$	0.4	

<sup>1</sup> Pulse Test: Pulse Width  $\leq 300\ \mu\text{s}$ , Duty Cycle  $\leq 2\%$ .

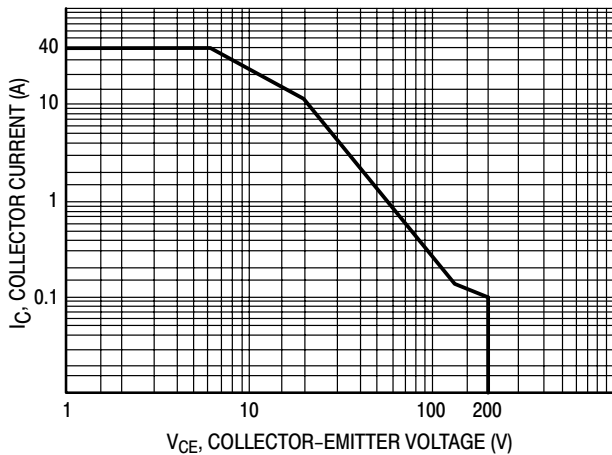


Figure 2. Active Region Safe Operating Area

There are two limitations on the power handling ability of a transistor: average junction temperature and second breakdown. Safe operating area curves indicate  $I_C - V_{CE}$  limits of the transistor that must be observed for reliable operation i.e., the transistor must not be subjected to greater dissipation than the curves indicate.

The data of Figure 2 is based on  $T_C = 25^\circ C$ ,  $T_{J(pk)}$  is variable depending on power level. Second breakdown limitations do not derate the same as thermal limitations.

At high case temperatures, thermal limitations will reduce the power that can be handled to values less than the limitations imposed by second breakdown.

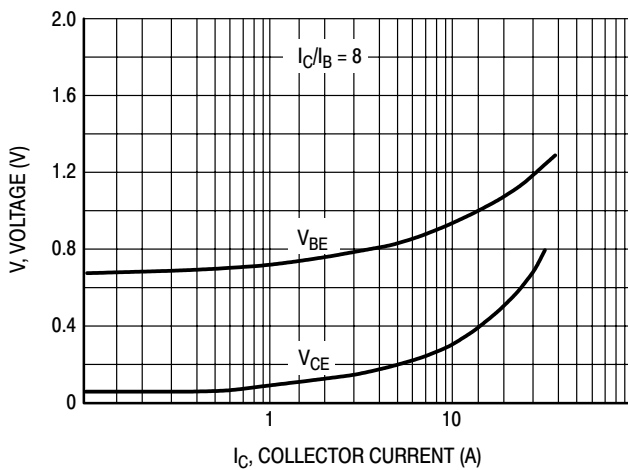


Figure 3. "On" Voltages

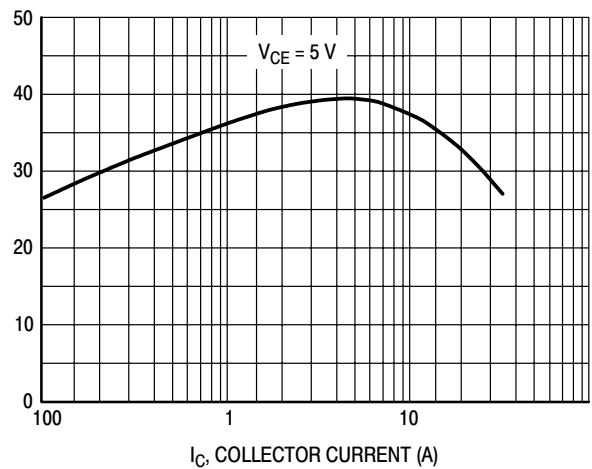


Figure 4. DC Current Gain

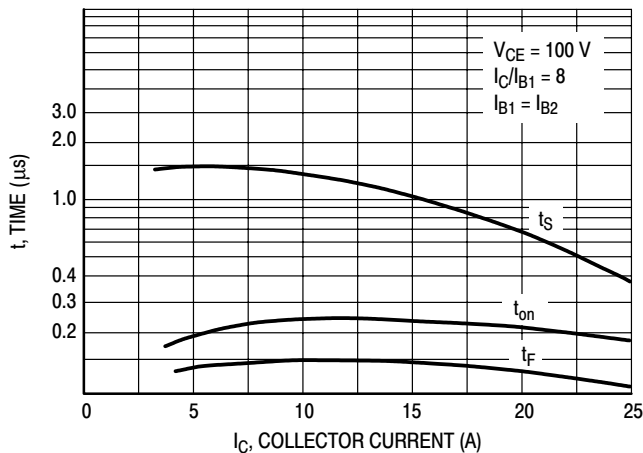
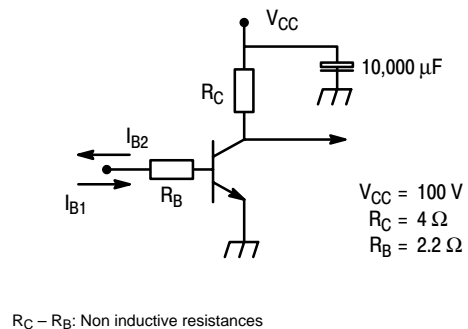


Figure 5. Resistive Switching Performance



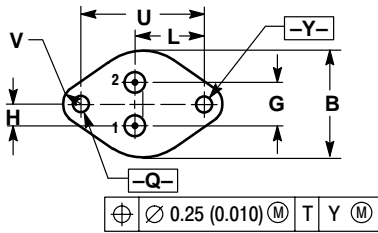
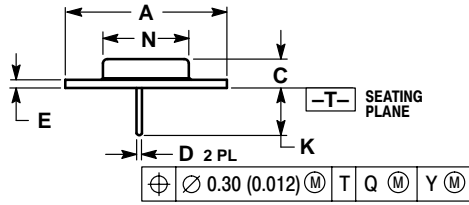
$R_C - R_B$ : Non inductive resistances

Figure 6. Switching Times Test Circuit

# BUV21

## PACKAGE DIMENSIONS


### TO-204 (TO-3) CASE 197A-05 ISSUE J



- NOTES:  
1. DIMENSIONING AND TOLERANCING PER ANSI Y14.5M, 1982.  
2. CONTROLLING DIMENSION: INCH.

DIM	INCHES		MILLIMETERS	
	MIN	MAX	MIN	MAX
A	1.530 REF		38.86 REF	
B	0.990	1.050	25.15	26.67
C	0.250	0.335	6.35	8.51
D	0.057	0.063	1.45	1.60
E	0.060	0.070	1.53	1.77
G	0.430 BSC		10.92 BSC	
H	0.215 BSC		5.46 BSC	
K	0.440	0.480	11.18	12.19
L	0.665 BSC		16.89 BSC	
N	0.760	0.630	19.31	21.08
Q	0.151	0.165	3.84	4.19
U	1.187 BSC		30.15 BSC	
V	0.131	0.188	3.33	4.77

SWITCHMODE is a trademark of Semiconductor Components Industries, LLC.

ON Semiconductor and  are trademarks of Semiconductor Components Industries, LLC (SCILLC). SCILLC reserves the right to make changes without further notice to any products herein. SCILLC makes no warranty, representation or guarantee regarding the suitability of its products for any particular purpose, nor does SCILLC assume any liability arising out of the application or use of any product or circuit, and specifically disclaims any and all liability, including without limitation special, consequential or incidental damages. "Typical" parameters which may be provided in SCILLC data sheets and/or specifications can and do vary in different applications and actual performance may vary over time. All operating parameters, including "Typicals" must be validated for each customer application by customer's technical experts. SCILLC does not convey any license under its patent rights nor the rights of others. SCILLC products are not designed, intended, or authorized for use as components in systems intended for surgical implant into the body, or other applications intended to support or sustain life, or for any other application in which the failure of the SCILLC product could create a situation where personal injury or death may occur. Should Buyer purchase or use SCILLC products for any such unintended or unauthorized application, Buyer shall indemnify and hold SCILLC and its officers, employees, subsidiaries, affiliates, and distributors harmless against all claims, costs, damages, and expenses, and reasonable attorney fees arising out of, directly or indirectly, any claim of personal injury or death associated with such unintended or unauthorized use, even if such claim alleges that SCILLC was negligent regarding the design or manufacture of the part. SCILLC is an Equal Opportunity/Affirmative Action Employer.

## PUBLICATION ORDERING INFORMATION

### NORTH AMERICA Literature Fulfillment:

Literature Distribution Center for ON Semiconductor  
P.O. Box 5163, Denver, Colorado 80217 USA  
**Phone:** 303-675-2175 or 800-344-3860 Toll Free USA/Canada  
**Fax:** 303-675-2176 or 800-344-3867 Toll Free USA/Canada  
**Email:** ONlit@hibbertco.com  
Fax Response Line: 303-675-2167 or 800-344-3810 Toll Free USA/Canada

### N. American Technical Support: 800-282-9855 Toll Free USA/Canada

### EUROPE: LDC for ON Semiconductor – European Support

**German Phone:** (+1) 303-308-7140 (Mon-Fri 2:30pm to 7:00pm CET)  
**Email:** ONlit-german@hibbertco.com  
**French Phone:** (+1) 303-308-7141 (Mon-Fri 2:00pm to 7:00pm CET)  
**Email:** ONlit-french@hibbertco.com  
**English Phone:** (+1) 303-308-7142 (Mon-Fri 12:00pm to 5:00pm GMT)  
**Email:** ONlit@hibbertco.com

### EUROPEAN TOLL-FREE ACCESS\*: 00-800-4422-3781

\*Available from Germany, France, Italy, UK, Ireland

### CENTRAL/SOUTH AMERICA:

**Spanish Phone:** 303-308-7143 (Mon-Fri 8:00am to 5:00pm MST)  
**Email:** ONlit-spanish@hibbertco.com  
**Toll-Free from Mexico:** Dial 01-800-288-2872 for Access –  
then Dial 866-297-9322

### ASIA/PACIFIC: LDC for ON Semiconductor – Asia Support

**Phone:** 1-303-675-2121 (Tue-Fri 9:00am to 1:00pm, Hong Kong Time)  
**Toll Free from Hong Kong & Singapore:**  
**001-800-4422-3781**  
**Email:** ONlit-asia@hibbertco.com

### JAPAN: ON Semiconductor, Japan Customer Focus Center

4-32-1 Nishi-Gotanda, Shinagawa-ku, Tokyo, Japan 141-0031  
**Phone:** 81-3-5740-2700  
**Email:** r14525@onsemi.com

### ON Semiconductor Website: <http://onsemi.com>

For additional information, please contact your local Sales Representative.

This datasheet has been download from:

[www.datasheetcatalog.com](http://www.datasheetcatalog.com)

Datasheets for electronics components.